

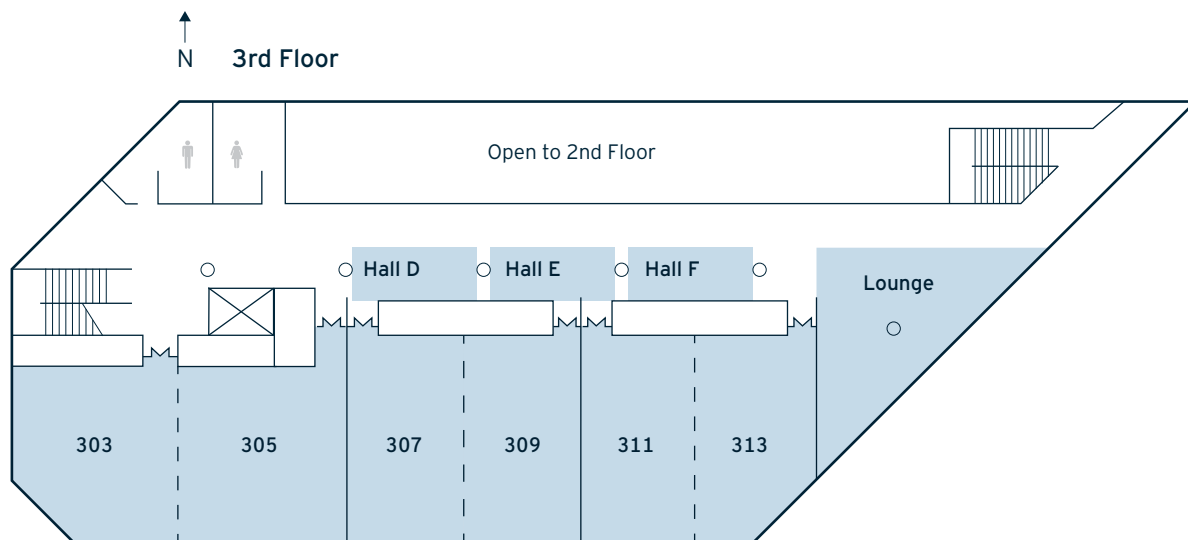
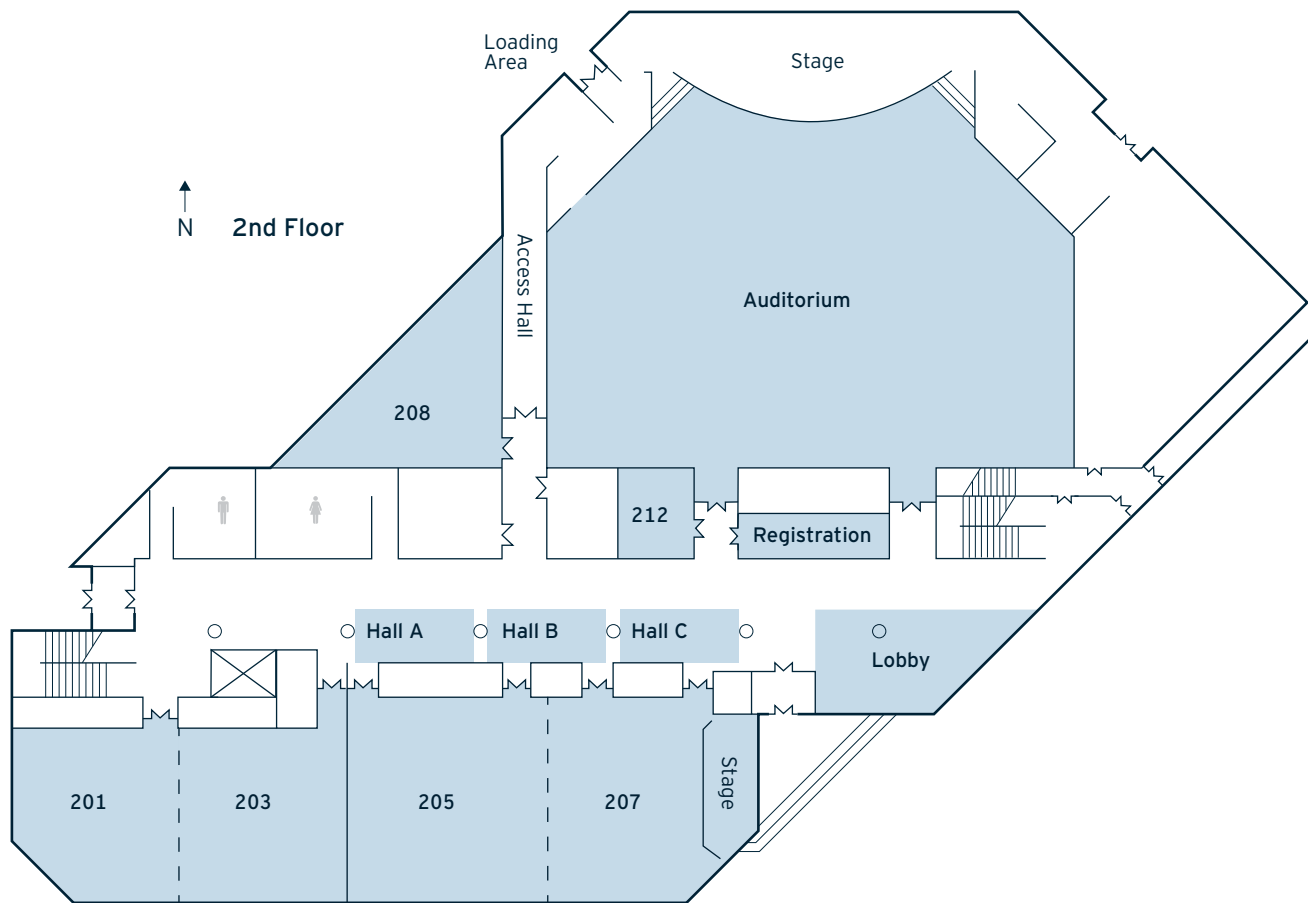
CAPACITY

EVENT SPACE	TOTAL SQ FT	DIMENSION L X W	CEILING HEIGHT	THEATER STYLE	CLASS ROOM	HOLLOW SQUARE	BANQUET (8)	RECEPTION
President's Hall	2,400	40' x 60'	14'	150	-	-	100	-
Veranda	1,120	40' x 28'	10'	-	-	-	72	-

PRICING

EVENT SPACE	USU AFFILIATED, CAMPUS GROUPS		EXTERNAL GROUPS, NON-UNIVERSITY		AMENITIES INCLUDED WITH THE ROOM RENTAL
	HALF DAY	FULL DAY	HALF DAY	FULL DAY	
President's Hall	\$280	\$350	\$490	\$700	Initial setup, basic audio package, projector package, complimentary WI-FI
Veranda	\$130	\$130	\$200	\$325	Initial setup, patio speakers, outdoor lighting

Procedures and rates are subject to change without notice.
Utah State University reserves the right to alter services and fees based on the size and scope of the event.



CAPACITY

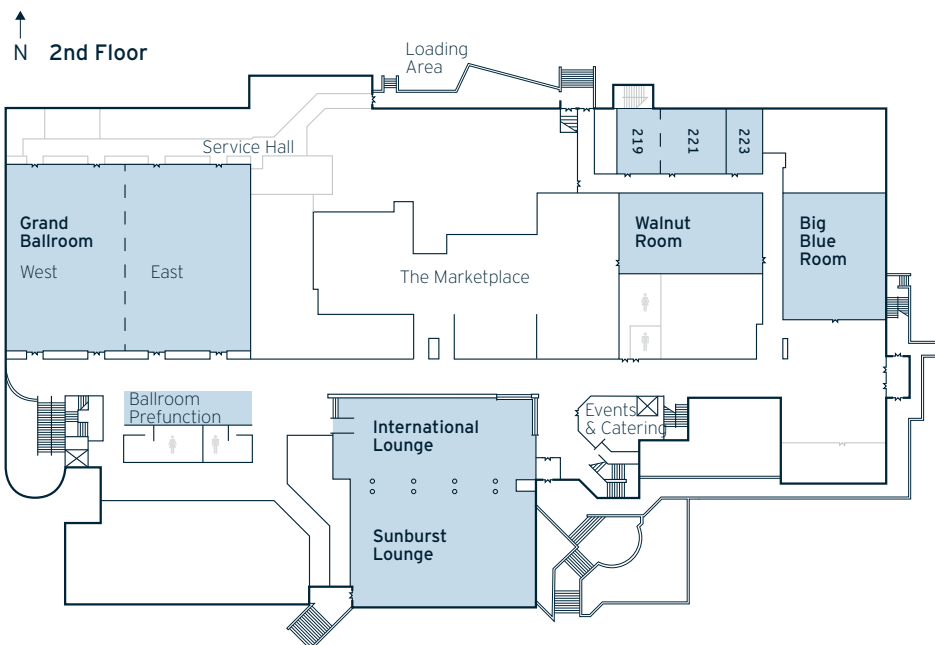
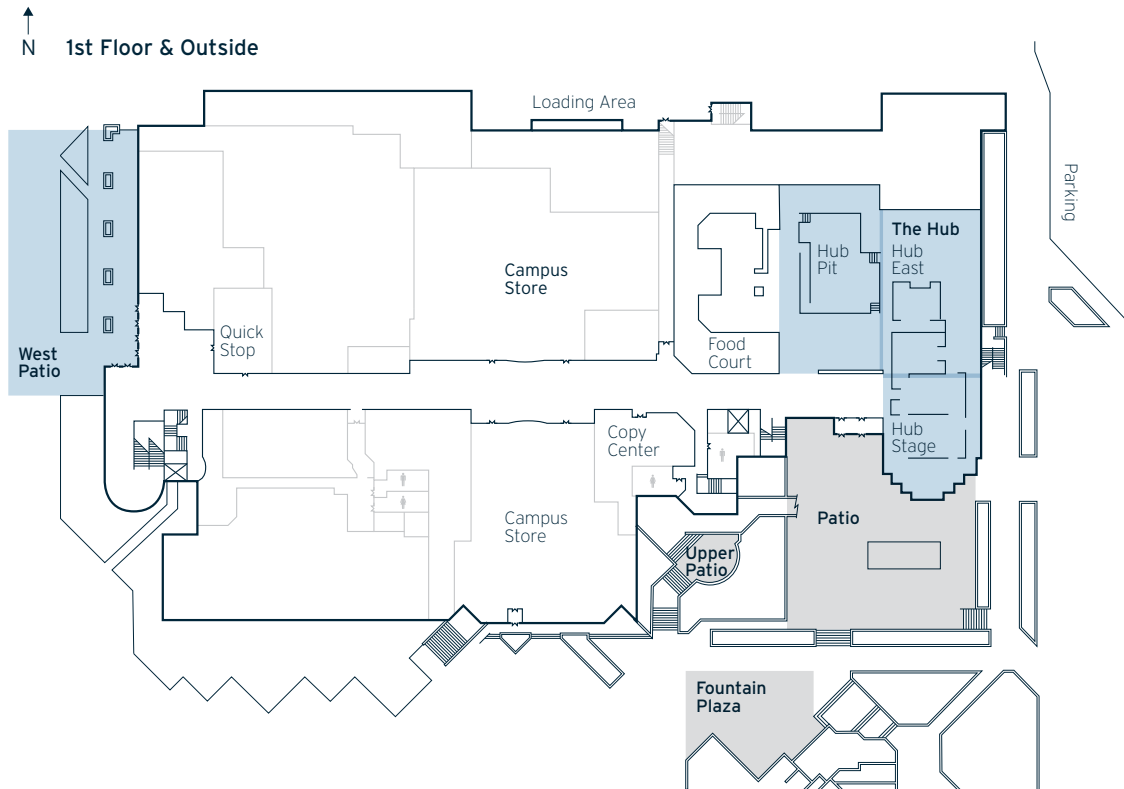
EVENT SPACE	TOTAL SQ FT	DIMENSION L X W	CEILING HEIGHT	THEATER STYLE	CLASS ROOM	HOLLOW SQUARE	BANQUET (8)	RECEPTION
201	624	24' X 26'	10'	35	24	20	32	-
203	624	24' X 26'	10'	50	32	20	40	-
201/203	1300	48' X 26'	10'	90	64	40	80	-
205	930	30' X 31'	10'	55	46	28	48	-
207	930	29' X 31'	10'	43	40	24	40	-
207 Stage	-	-	-	-	-	-	-	-
205/207	1829	59' X 31'	10'	110	90	44	96	-
208 Boardroom	648	18' X 36'	10'	-	-	14	-	-
212 Boardroom	121	11' X 11'	9'	-	-	6	-	-
214 Registration	110	5' X 22'	8'	-	-	-	-	-
216 Auditorium	5148	66' X 78'	12'	379	-	-	-	-
216 Auditorium Stage	-	-	-	-	-	-	-	-
303	624	24' X 26'	10'	35	24	20	32	-
305	624	24' X 26'	10'	50	32	20	40	-
303/305	1248	48' X 26'	10'	90	64	40	80	-
307	527	17' X 31'	10'	30	20	20	24	-
309	527	17' X 31'	10'	30	20	20	24	-
307/309	1054	34' X 31'	10'	60	50	48	60	-
311	527	17' X 31'	10'	30	20	20	24	-
313	527	17' X 31'	10'	30	20	20	24	-
311/313	1054	17' X 62'	10'	60	50	48	60	-
2nd Floor Lobby	625	34' X 31'	10'	-	-	-	-	-
3rd Floor Lounge	650	13' X 50'	10'	-	-	-	-	-
Hall A	-	18' x 7'	10'	-	-	-	-	-
Hall B	-	18' x 7'	10'	-	-	-	-	-
Hall C	-	18' x 7'	10'	-	-	-	-	-
Hall D	-	18' x 5'10"	10'	-	-	-	-	-
Hall E	-	18' x 5'10"	10'	-	-	-	-	-
Hall F	-	18' x 5'10"	10'	-	-	-	-	-

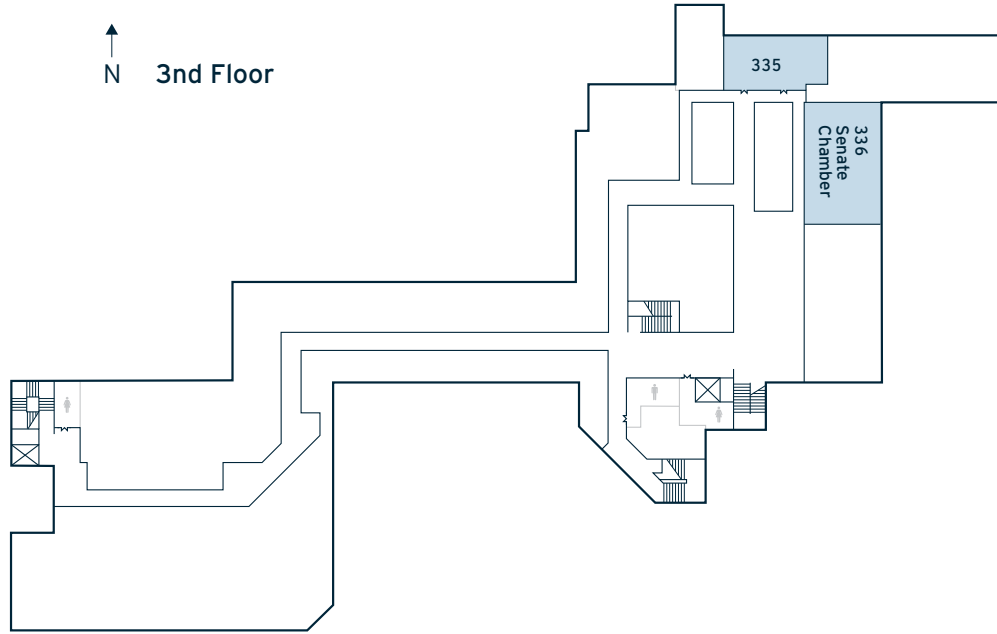
Utah State University reserves the right to alter services and fees based on the size and scope of the event.

PRICING

EVENT SPACE	USU AFFILIATED, CAMPUS GROUPS		EXTERNAL GROUPS, NON-UNIVERSITY		AMENITIES INCLUDED WITH THE ROOM RENTAL
	HALF DAY	FULL DAY	HALF DAY	FULL DAY	
201	\$100	\$165	\$150	\$245	Initial setup, basic audiovisual package, complimentary WI-FI
203	\$100	\$165	\$150	\$245	
201/203	\$155	\$260	\$230	\$385	
205	\$100	\$165	\$150	\$245	
207	\$100	\$165	\$150	\$245	
205/207	\$155	\$260	\$230	\$385	
208 Boardroom	\$50	\$80	\$75	\$120	
212 Boardroom	\$30	\$45	\$40	\$65	Boardroom set, complimentary WI-FI
214 Registration	\$30	\$45	\$40	\$65	Registration staff seating, complimentary WI-FI
216 Auditorium	\$225	\$375	\$330	\$550	Initial stage setup, basic audiovisual package, complimentary WI-FI
303	\$100	\$165	\$150	\$245	Initial setup, basic audiovisual package, complimentary WI-FI
305	\$100	\$165	\$150	\$245	
303/305	\$155	\$260	\$230	\$385	
307	\$100	\$165	\$150	\$245	
309	\$100	\$165	\$150	\$245	
307/309	\$155	\$260	\$230	\$385	
311	\$100	\$165	\$150	\$245	
313	\$100	\$165	\$150	\$245	
311/313	\$155	\$260	\$230	\$385	
2ND Floor Lobby	\$75	\$125	\$110	\$185	
3RD Floor Lounge	\$75	\$125	\$110	\$185	No fees will be charged for catered breaks/meals with meeting room rentals
Halls A - F	\$75	\$125	\$110	\$185	

Procedures and rates are subject to change without notice.
 Utah State University reserves the right to alter services and fees based on the size and scope of the event.





N 4th Floor



CAPACITY – 1ST FLOOR

EVENT SPACE	TOTAL SQ FT	DIMENSION L X W	CEILING HEIGHT	THEATER STYLE	CLASS ROOM	HOLLOW SQUARE	BANQUET (8)	RECEPTION
The Hub	10,738	-	8' - 10'	-	-	-	600	-
Hub Pit	-	48' x 90.5'	8' - 10'	-	-	-	-	-
Hub East	-	48' x 83'	8'	-	-	-	-	-
Hub Stage	-	46' (59') x 48'	8'	-	-	-	-	-

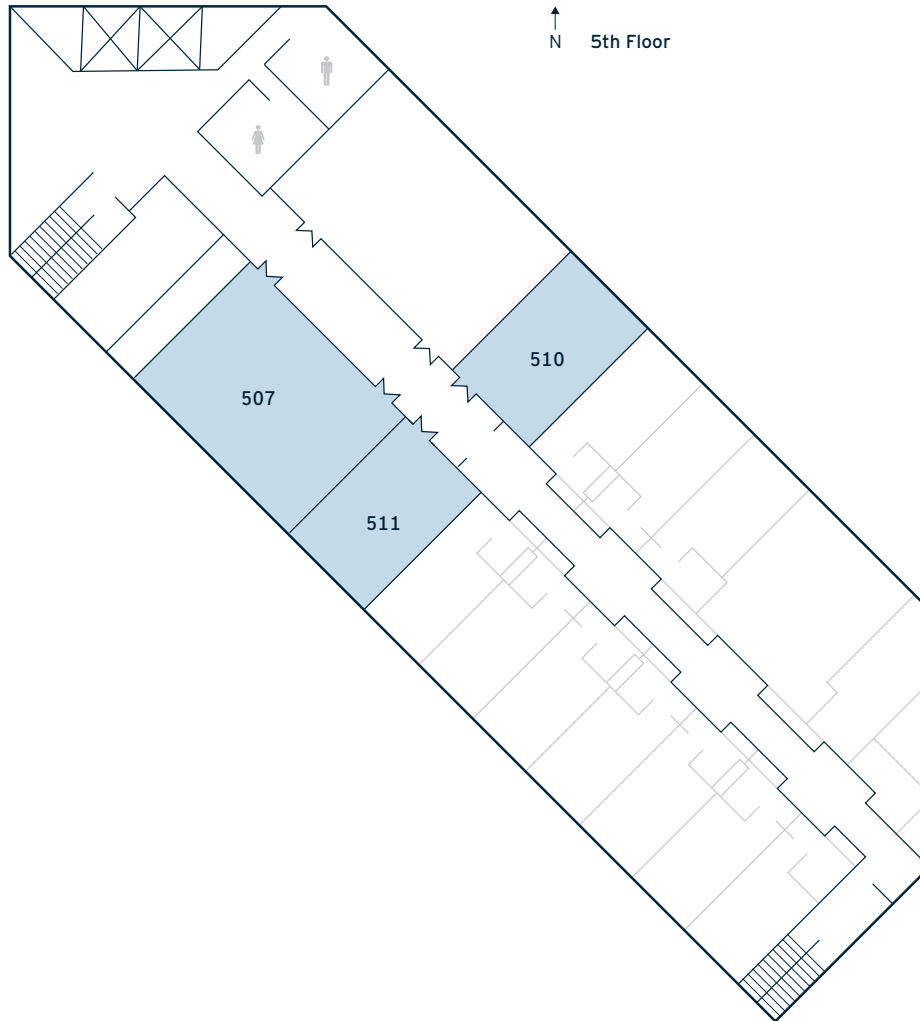
CAPACITY – 2ND FLOOR

EVENT SPACE	TOTAL SQ FT	DIMENSION L X W	CEILING HEIGHT	THEATER STYLE	CLASS ROOM	HOLLOW SQUARE	BANQUET (8)	BANQUET (10)
219	399	19' x 21'	8'	80	24	-	24	-
221	651	21' x 31'	8'	96	44	-	40	-
219/221	1,050	21' x 50'	8'	128	60	-	80	-
223 Boardroom	336	16' x 21'	10'	-	-	16	-	-
Big Blue Room	2491	47' x 53'	20'	130	72	-	112	-
Grand Ballroom	10,350	90' x 115'	22'	1360	600	160	640	936
West Ballroom	5,175	57.5' x 90'	22'	520	224	124	264	-
East Ballroom	5,175	57.5' x 90'	22'	768	224	124	264	-
Ballroom Prefunction	1,920	32' x 60'	14'	-	-	-	-	-
Sunburst International Lounge	7,986	80' x 99'	22'	674	152	104	260	-
Walnut Room	5,031	39' x 70'	10'	-	-	-	168	-

CAPACITY – 3RD/4TH FLOOR

EVENT SPACE	TOTAL SQ FT	DIMENSION L X W	CEILING HEIGHT	THEATER STYLE	CLASS ROOM	HOLLOW SQUARE	BANQUET (8)	RECEPTION
335 Classroom	819	21' x 39'	8'	-	40	-	-	-
336 Senate Chamber	1,230	30' x 41'	8'	-	-	24	-	-
The Skyroom	3,720	60' x 62'	10'	-	-	-	110	-
Skyroom Lounge	864	18' x 48'	10'	-	-	-	-	-

Utah State University reserves the right to alter services and fees based on the size and scope of the event.



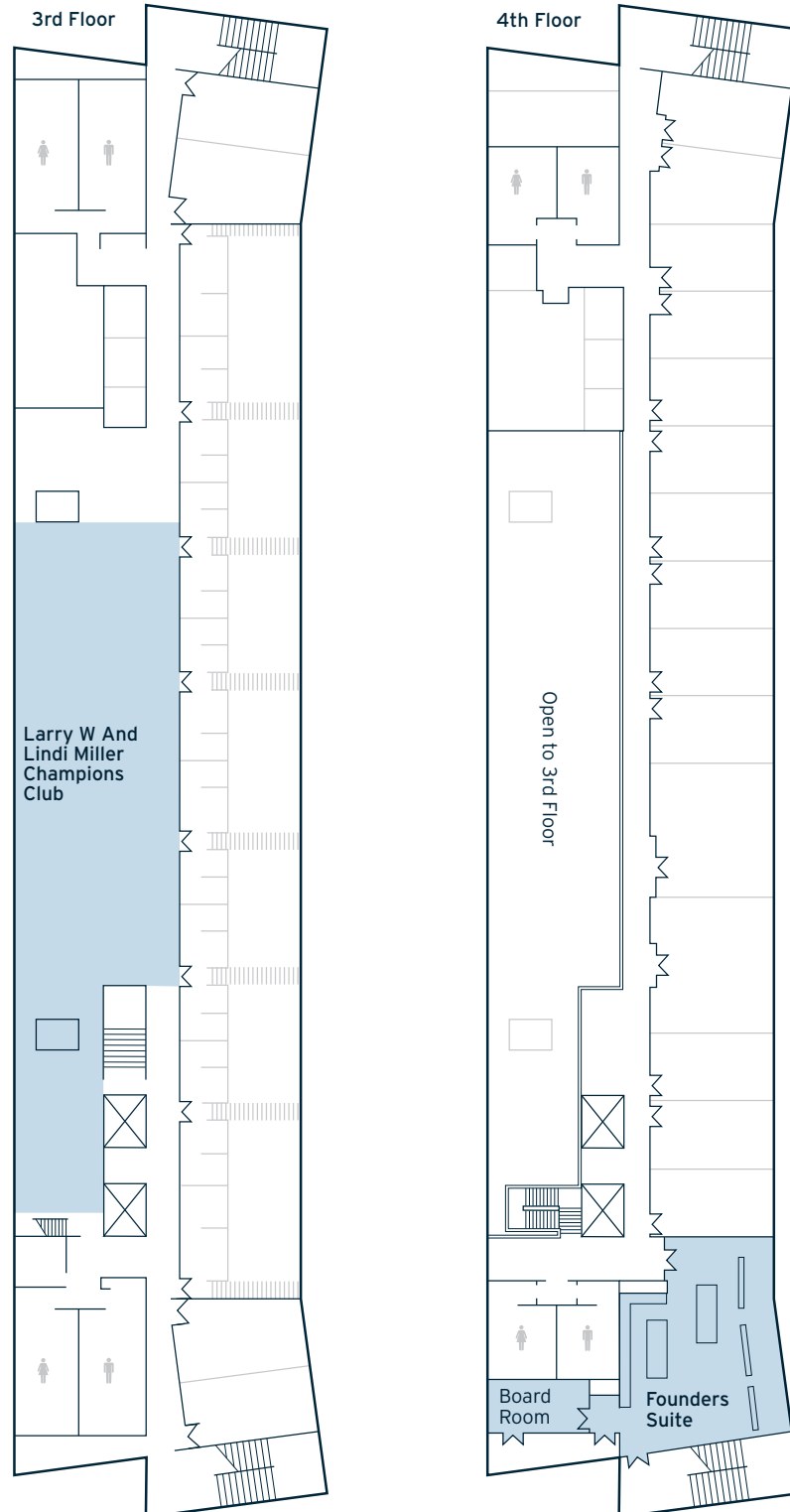
CAPACITY

EVENT SPACE	TOTAL SQ FT	DIMENSION L X W	CEILING HEIGHT	THEATER	CLASS-ROOM	HOLLOW SQUARE	BANQUET (8)	RECEPTION
507	864	24' X 36'	10'	70	40	26	48	-
510	432	24' X 18'	10'	30	16	18	24	-
511	432	24' X 18'	10'	30	16	18	24	-

PRICING

EVENT SPACE	USU AFFILIATED, CAMPUS GROUPS		EXTERNAL GROUPS, NON-UNIVERSITY		AMENITIES INCLUDED WITH THE ROOM RENTAL
	HALF DAY	FULL DAY	HALF DAY	FULL DAY	
507	\$105	\$185	\$160	\$270	Initial setup, basic audiovisual package, complimentary WI-FI
510	\$70	\$120	\$105	\$175	
511	\$70	\$120	\$105	\$175	

Procedures and rates are subject to change without notice.
Utah State University reserves the right to alter services and fees based on the size and scope of the event.



CAPACITY

EVENT SPACE	TOTAL SQ FT	DIMENSION L X W	CEILING HEIGHT	THEATER	CLASS-ROOM	HOLLOW SQUARE	BANQUET (8)	RECEPTION
Larry W & Lindi Miller Champion's Club	3,192	114' x 28'	22'	400	-	-	185	727
Founders Suite	1,363	47' x 29'	8'	-	-	-	-	-
3rd Floor Lounge	540	30' x 18'	22'	45	-	-	20	-

PRICING

EVENT SPACE	USU AFFILIATED, CAMPUS GROUPS		EXTERNAL GROUPS, NON-UNIVERSITY		AMENITIES INCLUDED WITH THE ROOM RENTAL
	HALF DAY	FULL DAY	HALF DAY	FULL DAY	
Larry W & Lindi Miller Champion's Club	\$630	\$910	\$900	\$1,300	TBD: Event insurance, evening parking (fewer than 200 guests and after 5 pm), initial setup, basic audio package, projector package, dimmable lighting, three floor signs, three gas fireplaces, grand staircase, and mezzanine
Founders Suite	-	-	\$750	-	Boardroom, lounge and dining area, club seating, serving area, beverage coolers, basic audiovisual package, complimentary WI-FI
3rd Floor Lounge	-	-	-	-	-

Procedures and rates are subject to change without notice.
Utah State University reserves the right to alter services and fees based on the size and scope of the event.

AGRICULTURAL SCIENCE (AGRS)		
#	SEATS	DISTANCING
101	114	36
102	-	12-14
107	-	12
137	45	17
141	38	9

ANIMAL SCIENCE (ANSC)		
#	SEATS	DISTANCING
314	39	9
320	33	12

AGRICULTURAL SYSTEMS TECHNOLOGY & EDUCATION (ASTE)		
#	SEATS	DISTANCING
104	32	9
106	20	6
108	52	15

DISTANCE EDUCATION (DE)		
#	SEATS	DISTANCING
5	24	8
6	10	4
11	10	3
12	40	14
13	76	28
105	24	6
109	28	7
202	30	8
203	12	4
204	30	8
209	6	3
211	30	10

ECCLES BUSINESS BUILDING (EBB)		
#	SEATS	DISTANCING
116	40	10
214	40	10
215	278	63
216	40	8
218	40	10

EARLY CHILDHOOD EDUCATION & RESEARCH CENTER (ECERC)		
#	SEATS	DISTANCING
226	21	9
228	19	9

EDUCATION (EDUC)		
#	SEATS	DISTANCING
130	30	8
130A	30	9
131	130	24
132	22	8
178	36	10
231	-	10
233	35	6
272	18	6
282	32	14

ENGINEERING BUILDING (ENGR)		
#	SEATS	DISTANCING
101	158	44
103	219	56
104	65	17
106	68	18
108	122	31
201	78	18
202	32	8
203	78	19
204	34	8
205	60	15
206	30	9
238	46	13
302	102	28
304	40	13
401	38	17

ENGINEERING LABORATORY (ENLAB)		
#	SEATS	DISTANCING
109	40	9
221	49	17
235B	32	15
248	42	15
250	40	17
252	40	11

ECCLES SCIENCE LEARNING CENTER (ESLC)		
#	SEATS	DISTANCING
46	162	31
53	48	23
130	489	94

FINE ARTS CENTER (FAC) & FINE ARTS VISUAL (FAV)		
#	SEATS	DISTANCING
C228	16	6
MT	711	99
V113	36	-
V150	182	34
V262	80	16
V264	80	16

FAMILY LIFE (FL)		
#	SEATS	DISTANCING
109	25	9
115	49	12
206	106	33
301	30	8
307	30	12
318	23	10

GEOLOGY (GEOL)		
#	SEATS	DISTANCING
105	100	21
302	49	15
308	32	7
310	24	8
405	49	12

HUNTSMAN HALL (HH)		
#	SEATS	DISTANCING
103	24	7
120	30	12
122	30	12
126	30	11
130	49	23
132	49	23
160	49	23
170	49	23
180	49	23
220	79	34
222	79	34
226	79	34
260	49	23
270	49	23
280	49	23
320	79	34
322	79	34
326	79	34
360	49	23
370	49	23
380	49	23

HEALTH, PHYSICAL EDUCATION & RECREATION (HPER)		
#	SEATS	DISTANCING
111E	37	10
114	117	23
114A	49	16
116	43	15
118	58	14

INDUSTRIAL SCIENCE (IS)		
#	SEATS	DISTANCING
101A	40	9
116	20	7

MERRILL-CAZIER LIBRARY (LIB)		
#	SEATS	DISTANCING
204	-	11
302	39	9
405	33	10
411	49	12
421	56	13

LILLYWHITE (LILLY)		
#	SEATS	DISTANCING
3	33	10
6	23	8

LIVING LEARNING COMMUNITY (LLCA)		
#	SEATS	DISTANCING
102	-	-
110	-	-

LIFE SCIENCES BUILDING (LSB)		
#	SEATS	DISTANCING
133	310	62
207	66	17
231	96	24

OLD MAIN (MAIN)		
#	SEATS	DISTANCING
6	30	9
115	112	19
117	42	8
119	56	13
121	172	31
201	42	10
203	30	8
207	34	7
225	253	59
227	20	6
301	49	13
326	66	13

NUTRITION & FOOD SCIENCES (NFS)		
#	SEATS	DISTANCING
201	30	10
202	96	32
248A	28	10

NATURAL RESOURCES (NR)		
#	SEATS	DISTANCING
105	96	31

RAY B. WEST (RWST)		
#	SEATS	DISTANCING
113	25	10
114	30	12
214	30	10
306	25	9
311	23	5

SORENSEN LEGACY FOUNDATION CENTER FOR CLINICAL EXCELLENCE (SCCE)		
#	SEATS	DISTANCING
150	79	31
310	30	15

SCIENCE ENGINEERING RESEARCH (SER)		
#	SEATS	DISTANCING
122	24	6
244	-	14

TECHNOLOGY (TECH)		
#	SEATS	DISTANCING
107	36	8
108	32	12
122	36	11

UNIVERSITY RESERVE (UR)		
#	SEATS	DISTANCING
103	18	5

VETERINARY SCIENCE & BIOLOGY (VSB)		
#	SEATS	DISTANCING
130	126	25

WIDTSOE HALL (WIDT)		
#	SEATS	DISTANCING
7	180	36

LOGAN CLASSROOMS			
BLD	RM #	MAX	SD
AGRS	101	114	36
AGRS	102	-	12-14
AGRS	107	-	12
AGRS	137	45	17
AGRS	141	38	9
ANSC	314	39	9
ANSC	320	33	12
ASTE	104	32	9
ASTE	106	20	6
ASTE	108	52	15
DE	5	24	8
DE	6	10	4
DE	11	10	3
DE	12	40	14
DE	13	76	28
DE	105	24	6
DE	109	28	7
DE	202	30	8
DE	203	12	4
DE	204	30	8
DE	209	6	3
DE	211	30	10
EBB	116	40	10
EBB	214	40	10
EBB	215	278	63
EBB	216	40	8
EBB	218	40	10
ECERC	226	21	9
ECERC	228	19	9
EDUC	130	30	8
EDUC	130A	30	9
EDUC	131	130	24
EDUC	132	22	8
EDUC	178	36	10
EDUC	231	-	10
EDUC	233	35	6
EDUC	272	18	6
EDUC	282	32	14

LOGAN CLASSROOMS			
BLD	RM #	MAX	SD
ENGR	101	158	44
ENGR	103	219	56
ENGR	104	65	17
ENGR	106	68	18
ENGR	108	122	31
ENGR	201	78	18
ENGR	202	32	8
ENGR	203	78	19
ENGR	204	34	8
ENGR	205	60	15
ENGR	206	30	9
ENGR	238	46	13
ENGR	302	102	28
ENGR	304	40	13
ENGR	401	38	17
ENLAB	109	40	9
ENLAB	221	49	17
ENLAB	235B	32	15
ENLAB	248	42	15
ENLAB	250	40	17
ENLAB	252	40	11
ESLC	46	162	31
ESLC	53	48	23
ESLC	130	489	94
FAC	228	16	6
FAC	MT	711	99
FAV	113	36	-
FAV	150	182	34
FAV	262	80	16
FAV	264	80	16
FL	109	25	9
FL	115	49	12
FL	206	106	33
FL	301	30	8
FL	307	30	12
FL	318	23	10
GEOL	105	100	21
GEOL	302	49	15

LOGAN CLASSROOMS			
BLD	RM #	MAX	SD
GEOL	308	32	7
GEOL	310	24	8
GEOL	405	49	12
HH	103	24	7
HH	120	30	12
HH	122	30	12
HH	126	30	11
HH	130	49	23
HH	132	49	23
HH	160	49	23
HH	170	49	23
HH	180	49	23
HH	220	79	34
HH	222	79	34
HH	226	79	34
HH	260	49	23
HH	270	49	23
HH	280	49	23
HH	320	79	34
HH	322	79	34
HH	326	79	34
HH	360	49	23
HH	370	49	23
HH	380	49	23
HPER	111E	37	10
HPER	114	117	23
HPER	114A	49	16
HPER	116	43	15
HPER	118	58	14
IS	101A	40	9
IS	116	20	7
LIB	204	-	11
LIB	302	39	9
LIB	405	33	10
LIB	411	49	12
LIB	421	56	13
LILLY	3	33	10
LILLY	6	23	8

LOGAN CLASSROOMS			
BLD	RM #	MAX	SD
LLCA	102	-	-
LLCA	110	-	-
LSB	133	310	62
LSB	207	66	17
LSB	231	96	24
MAIN	6	30	9
MAIN	115	112	19
MAIN	117	42	8
MAIN	119	56	13
MAIN	121	172	31
MAIN	201	42	10
MAIN	203	30	8
MAIN	207	34	7
MAIN	225	253	59
MAIN	227	20	6
MAIN	301	49	13
MAIN	326	66	13
NFS	201	30	10
NFS	202	96	32
NFS	248A	28	10
NR	105	96	31
RWST	113	25	10
RWST	114	30	12
RWST	214	30	10
RWST	306	25	9
RWST	311	23	5
SCCE	150	79	31
SCCE	310	30	15
SER	122	24	6
SER	244	-	14
TECH	107	36	8
TECH	108	32	12
TECH	122	36	11
UR	103	18	5
VSU	130	126	25
WIDT	7	180	36

CAINE COLLEGE OF THE ARTS

EVENT SPACE	TOTAL SQ FT	DIMENSION L X W	CEILING HEIGHT	BANQUET TABLES	THEATER STYLE	CLASS ROOM	PHOTO LINKS
Daines Concert Hall	-	-	-	-	133	-	-
Morgan Theater	-	-	-	-	74	-	-
Russell/Wanlass Performance Hall	-	-	-	-	49	-	-

DAVID B HAIGHT CENTER

EVENT SPACE	TOTAL SQ FT	DIMENSION L X W	CEILING HEIGHT	BANQUET TABLES	THEATER STYLE	CLASS ROOM	PHOTO LINKS
President's Hall	2,400	40' x 60'	14'	15	25	25*	BANQUET ROUNDS, THEATER
Veranda	1,120	28' x 40'	10'	-	-	-	-

DEE GLEN SMITH SPECTRUM

EVENT SPACE	TOTAL SQ FT	DIMENSION L X W	CEILING HEIGHT	BANQUET TABLES	THEATER STYLE	CLASS ROOM	PHOTO LINKS
Arena Seating	-	-	-	-	1027	-	-
Champ Room	-	-	-	18	24	-	BANQUET ROUNDS, THEATER

ECCLES CONFERENCE CENTER

EVENT SPACE	TOTAL SQ FT	DIMENSION L X W	CEILING HEIGHT	BANQUET TABLES	THEATER STYLE	CLASS ROOM	PHOTO LINKS
201/203	1,300	48' x 26'	10'	18	23	18	BANQUET ROUNDS, THEATER
205/207	1,829	59' x 31'	10'	18	24	23	BANQUET ROUNDS, THEATER
216 Auditorium	5148	66' x 78'	8' - 12'	-	63†	63†	THEATER FRONT, THEATER BACK
303/305	1,248	48' x 26'	10'	18	23	18	BANQUET ROUNDS, THEATER
307/309	1054	34' x 31'	10'	15	12	12	-
311/313	1054	34' x 31'	10'	15	12	12	-

MAVERIK STADIUM

EVENT SPACE	TOTAL SQ FT	DIMENSION L X W	CEILING HEIGHT	BANQUET TABLES	THEATER STYLE	CLASS ROOM	PHOTO LINKS
Larry W & Lindi Miller Champion's Club	3,192	28' x 114'	22'	54	56	52**	BANQUET ROUNDS, THEATER, CLASSROOM
Stadium Seating	-	-	-	-	6020	-	-

TAGGART STUDENT CENTER

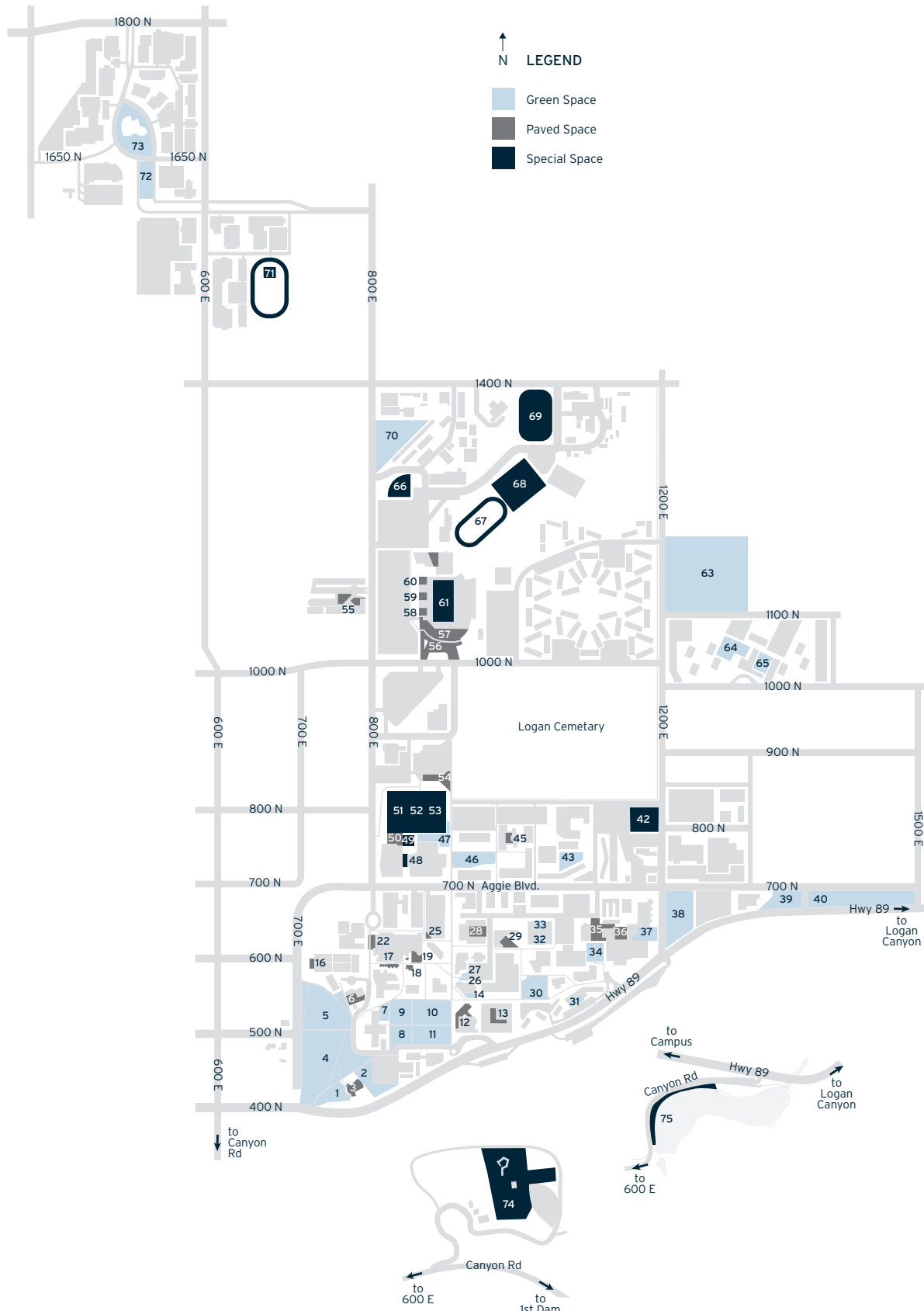
EVENT SPACE	TOTAL SQ FT	DIMENSION L X W	CEILING HEIGHT	BANQUET TABLES	THEATER STYLE	CLASS ROOM	PHOTO LINKS
219/221	1,500	30' x 50'	8'	21	20	-	-
Big Blue Room	2491	47' x 53'	20'	24	29	16	-
Grand Ballroom	10,350	90' x 115'	22'	84	135	135**	BANQUET ROUNDS, THEATER, CLASSROOM
The Hub	10,738	-	-	440	-	-	-
Sunburst Lounge & International Lounge	9,000	90' x 100'	22'	48	55	55	BANQUET ROUNDS, THEATER

Numbers are based on 6ft social distancing guidelines.

*White tables would need to be purchased to accommodate classroom set.

**Additional tables would need to be purchased to accommodate classroom set. WSC currently only has 30 of the 52 necessary.

†Four ADA seats—Includes two wheelchair spaces and companion seating. Additionally, a choice of two up front designated aisle seats with collapsible arms are available.



OUTDOOR SPACES		
#	EVENT SPACE	TYPE
1	Lower Amphitheater Lawn	Grass
2	Upper Amphitheater Lawn	Grass
3	Amphitheater	Special
4	South Old Main Hill	Grass
5	North Old Main Hill	Grass
6	David B Haight Veranda/Lawn	Paved/Grass
7	True Aggie Lawn	Grass
8	South West Quad	Grass
9	North West Quad	Grass
10	North East Quad	Grass
11	South East Quad	Grass
12	Ag Science Patio	Paved
13	Huntsman Hall Courtyard	Paved
14	ECC South Lawn	Grass
16	LLC West Patio & Firepit	Paved
17	TSC South Plaza	Paved
18	TSC Fountain Plaza	Paved
19	TSC Patio	Paved
22	TSC West Patio/Walkway	Paved
25	TSC East Plaza	Paved
26	ECC North Lawn	Grass
27	LSB South Lawn	Grass
28	BNR Courtyard	Paved
29	Natural Resources Patio	Paved
30	Merrill-Cazier Library Lawn	Grass
31	Merrill Hall Lawn	Grass
32	Technology South Lawn	Grass
33	Technology North Lawn	Grass
34	Fine Arts West Lawn	Grass
35	Museum Patio	Paved
36	Ron & Janet Gibson Family Courtyard	Paved
37	Fine Arts East Lawn	Grass
38	1200 East Lawn	Grass
39	Mount Air Park - West	Grass
40	Mount Air Park - East	Grass
42	Tennis Courts	Special

OUTDOOR SPACES		
#	EVENT SPACE	TYPE
43	Junction East Lawn	Grass
45	Beverley Garden	Paved
46	Education Lawn	Grass
47	HPER North Lawn	Grass
48	ARC Outdoor Basketball Courts	Special
49	ARC Sand Volleyball Courts	Special
50	ARC North Patio	Paved
51	Aggie Legacy West Field	Special
52	Aggie Legacy Middle Field	Special
53	Aggie Legacy East Field	Special
54	Spectrum South Concourse	Paved
55	Blue Square Plaza	Paved
56	Maverik Stadium South Plaza	Paved
57	Maverik Stadium South Concourse	Paved
58	Skybox Concourse Patio South	Paved
59	Skybox Concourse Patio Central	Paved
60	Skybox Concourse Patio North	Paved
61	Merlin Olsen Field	Special
62	North End Zone Patio	Paved
63	North East Soccer Field	Grass
64	SLC West Lawn	Grass
65	SLC East Lawn & Fire Pit	Grass
66	LeGrand & Laree Johnson Softball Field	Special
67	Ralph Maughan Track	Special
68	Football Practice Field	Special
69	Chuck & Gloria Bell Soccer Field	Special
70	Craig Aston Park	Grass
71	EVR Track	Special
72	Grand Ave Lawn	Grass
73	SDL Pond	Grass
74	Challenge Course	Special
75	First Dam	Special